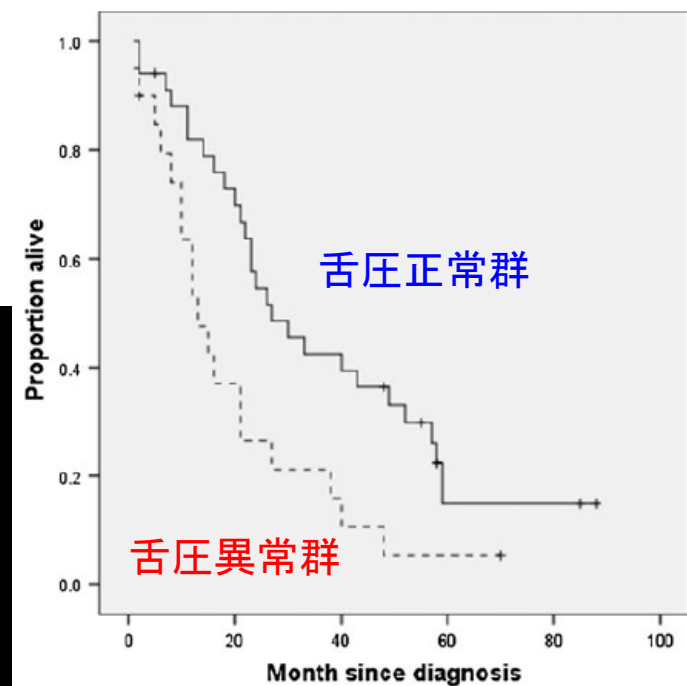


# Prognostic value of decreased tongue strength on survival time in patients with amyotrophic lateral sclerosis

J. G. Weikamp · H. J. Schelhaas · J. C. M. Hendriks ·  
B. J. M. de Swart · A. C. H. Geurts

	Tongue strength				<i>p</i>
	Abnormal ( <i>n</i> = 20) median (range)/ <i>n</i> (%)	Normal ( <i>n</i> = 34) median (range)/ <i>n</i> (%)			
Sex (male)	7 (35)	18 (51)			0.26*
Onset site (bulbar)	13 (65)	6 (18)			<0.00*
Bulbar symptoms (presence)	17 (85)	9 (32)			<0.00*
Bulbar signs (presence)	15 (75)	5 (15)			<0.00*
Gastrostomy (presence)	12 (60)	14 (41)			0.09*
MPT (<10 sec) <sup>a</sup>	6 (35)	5 (17)			0.28*
Age at diagnosis (year)	66.0 (20.0–80.0)	63.5 (40.0–79.0)			0.52**
Time from symptoms to diagnosis (month)	12.0 (6.0–60.0)	10.0 (4.0–60.0)			0.70**

# 舌圧測定検査



舌圧は、独立して生命予後を規定する因子である